



COLLOFA
PROFI

Czech family company
Since 1992



COLORprofi Holding consists of



Industry

Manual painting
Railway & Aerospace



Automotive

Robotic painting
Automotive industry



Plastic

Injection moulding
Automotive industry



Fiber

Carbon products
Cycling industry



Metal

Future iron
production



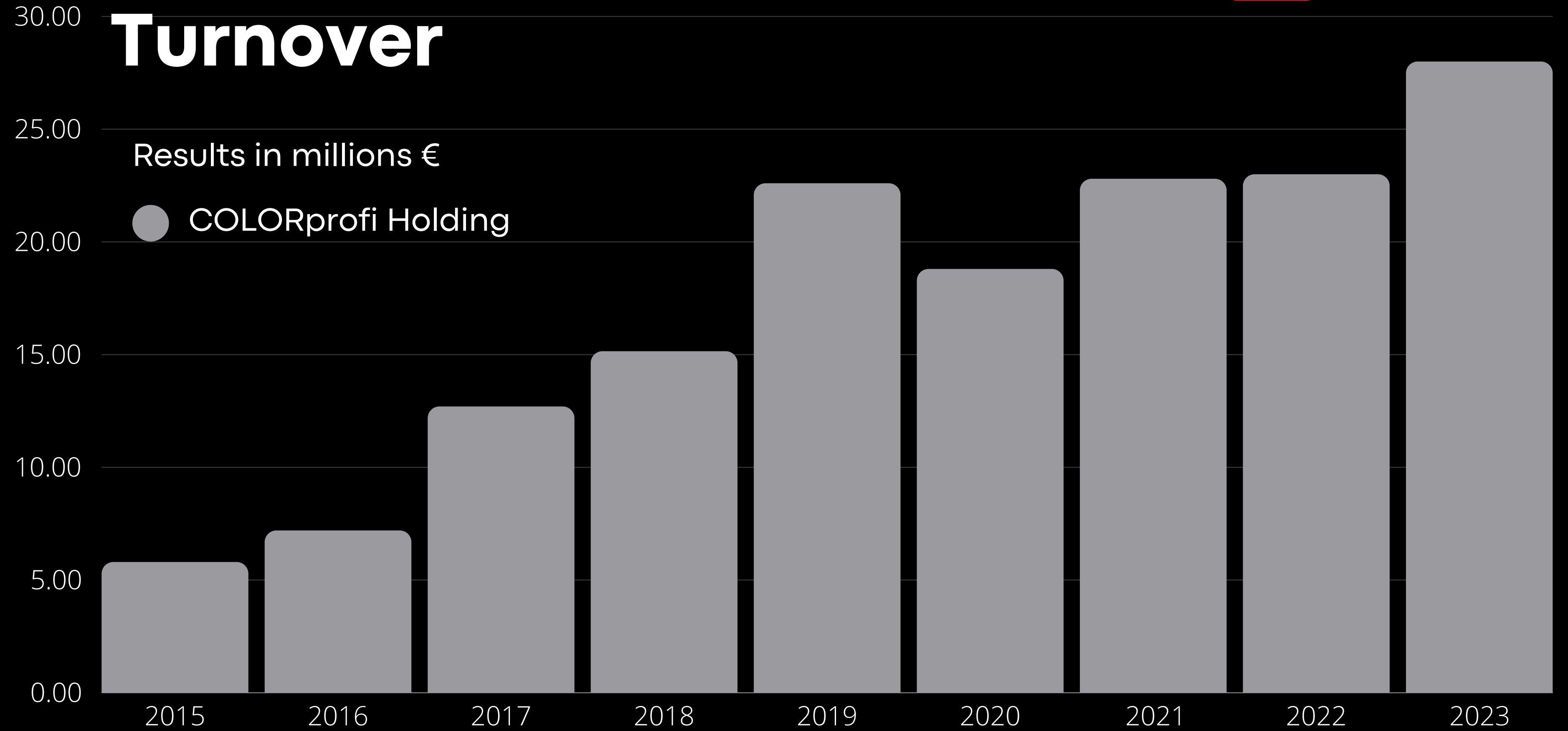
One

Stock company
rental of premises

Turnover

Results in millions €

● COLORprofi Holding



Employees

To date 1.1.2025

255

Certification

ISO 9001

ISO 14001

IATF 16949

AS 9100



Bureau Veritas Certification

Certificate of Approval



Awarded to

COLORprofi Automotive, spol. s r.o.

Chrudichromská 2403/16, 680 01, Boskovice, Czech Republic

Bureau Veritas Certification certify that the Quality Management System of the above organisation has been audited and found to be in accordance with the requirements of

IATF 16949 - First Edition

and the applicable customer specific requirements



SCOPE

Manufacturing

PERMITTED EXCLUSION(S)

8.3 - Design and development of products and services

PRODUCT(S) DELIVERED

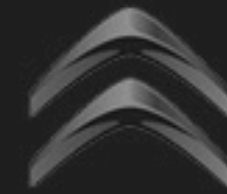
Painting, Wet industry painting application of plastic parts, including components assembly

Date Of Certification: 01-11-2021

Date Of Expiration: 31-10-2024

IATF Certificate N°: 432829

References



Quality

Information internal system MARS

- online recording of process for Kaizen/ escalation
- traceability
- process reporting
- trends evaluation by management

Quality reporting

- light chamber, film thickness, hardness test, approval report, wave scanner, gloss meter, 5 axis spectrometer, spectrometer, colormeter



COLORprofi **Industry**

Industrial Rail & Aerospace painting



Industrial Rail & Aerospace painting





A close-up, low-angle shot of a row of blue car body panels, likely door sills or side moldings, arranged in a factory setting. The panels are stacked and recede into the background, creating a strong sense of perspective. The lighting is bright and industrial, with overhead lights visible in the blurred background. The panels have a smooth, glossy finish and rounded edges. In the top right corner, the 'COLOR' logo is visible, featuring a red square icon followed by the word 'COLOR' in a white, sans-serif font.

COLOR

COLOR





Chemical pretreatment passivation





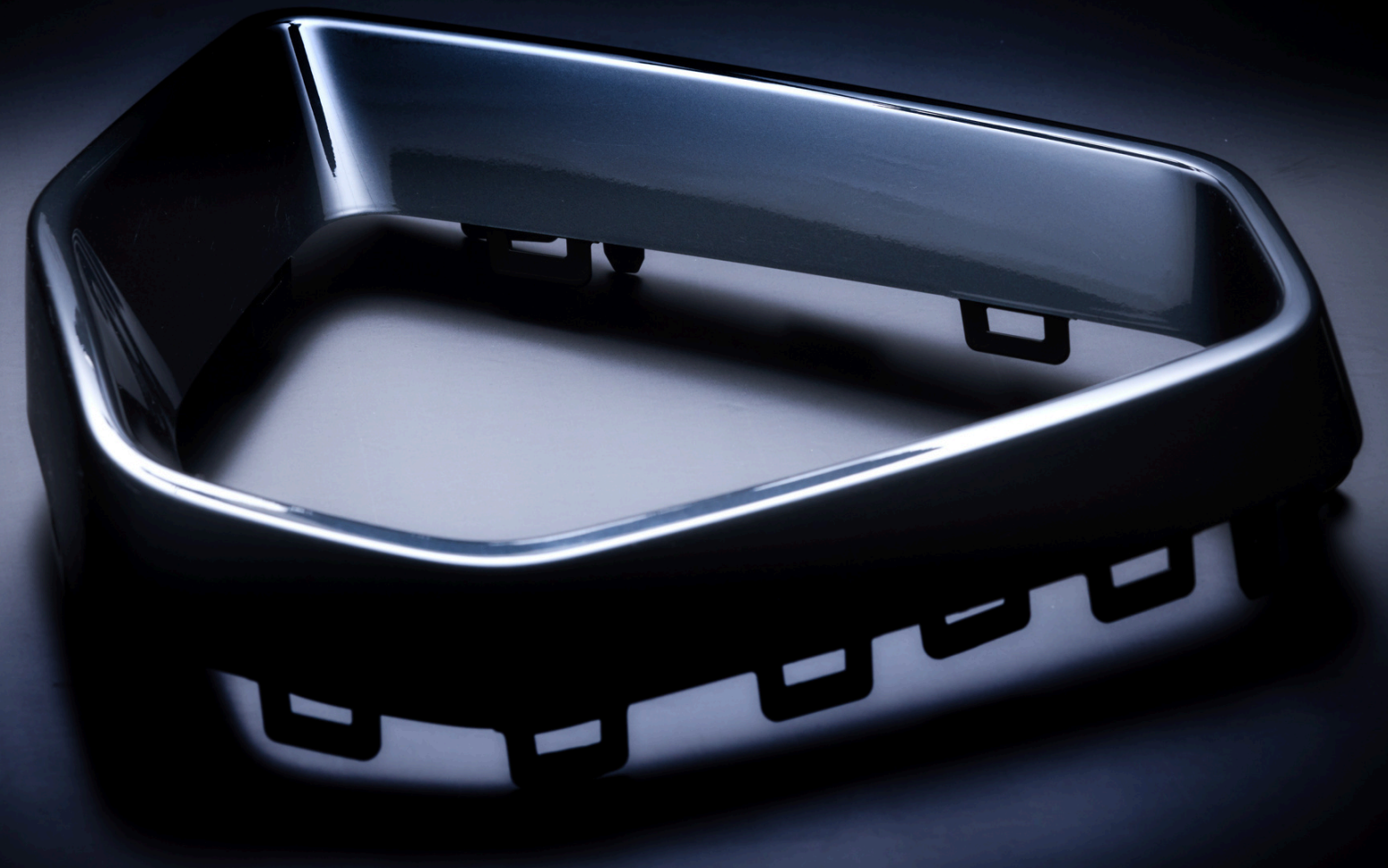
COLOR





COLORprofi **Automotive**

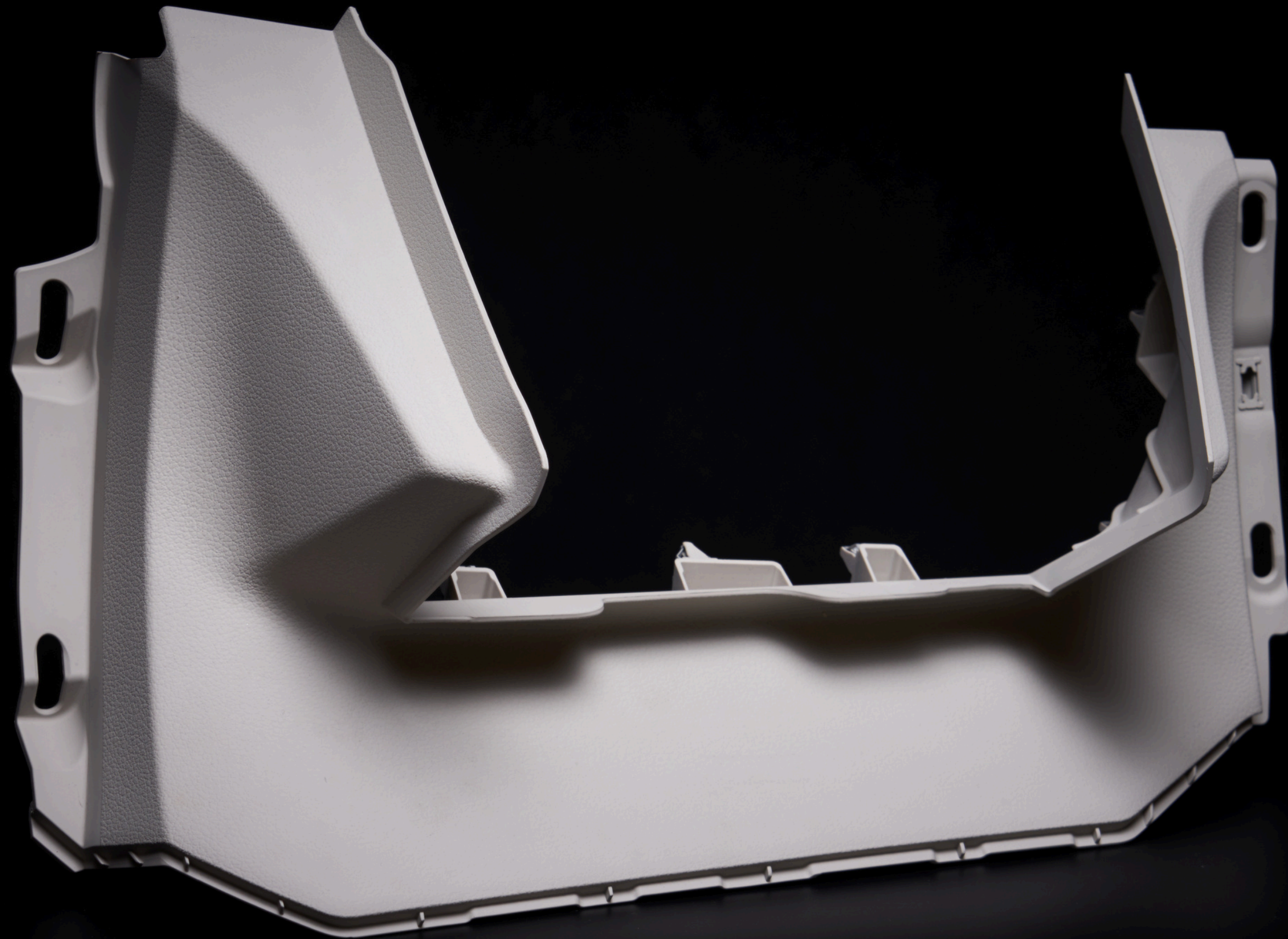
Automotive painting

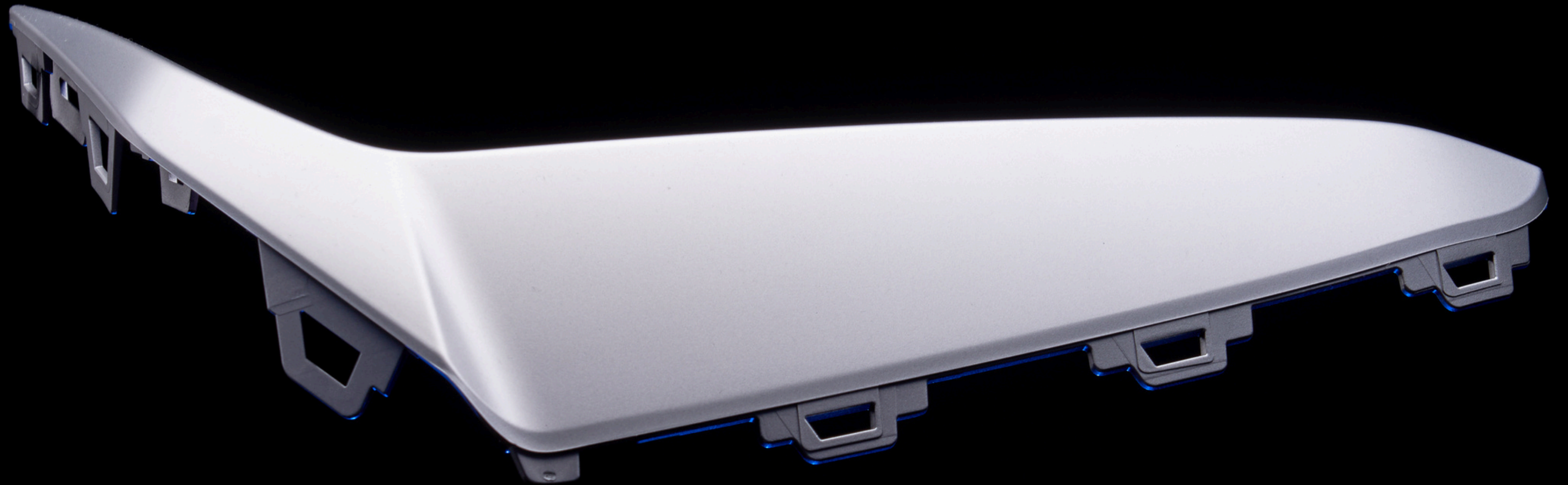


Automotive painting



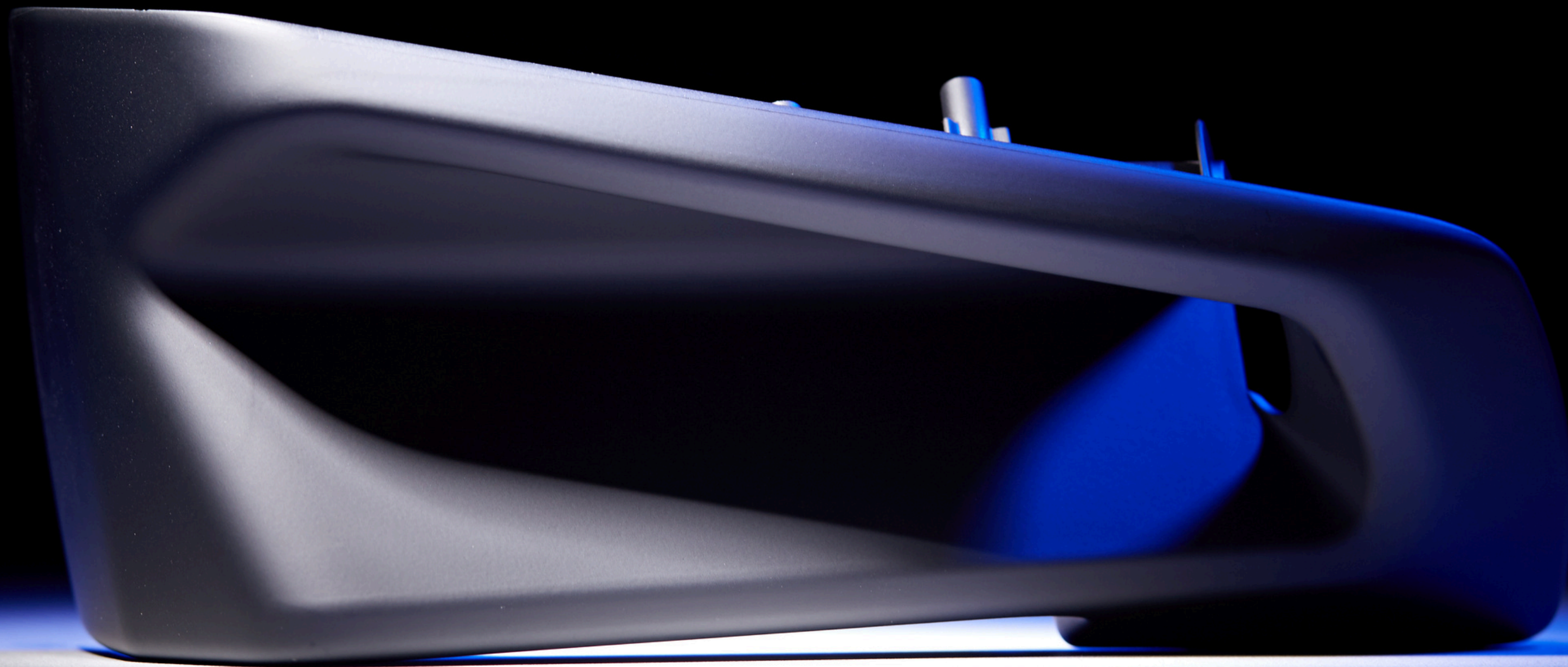




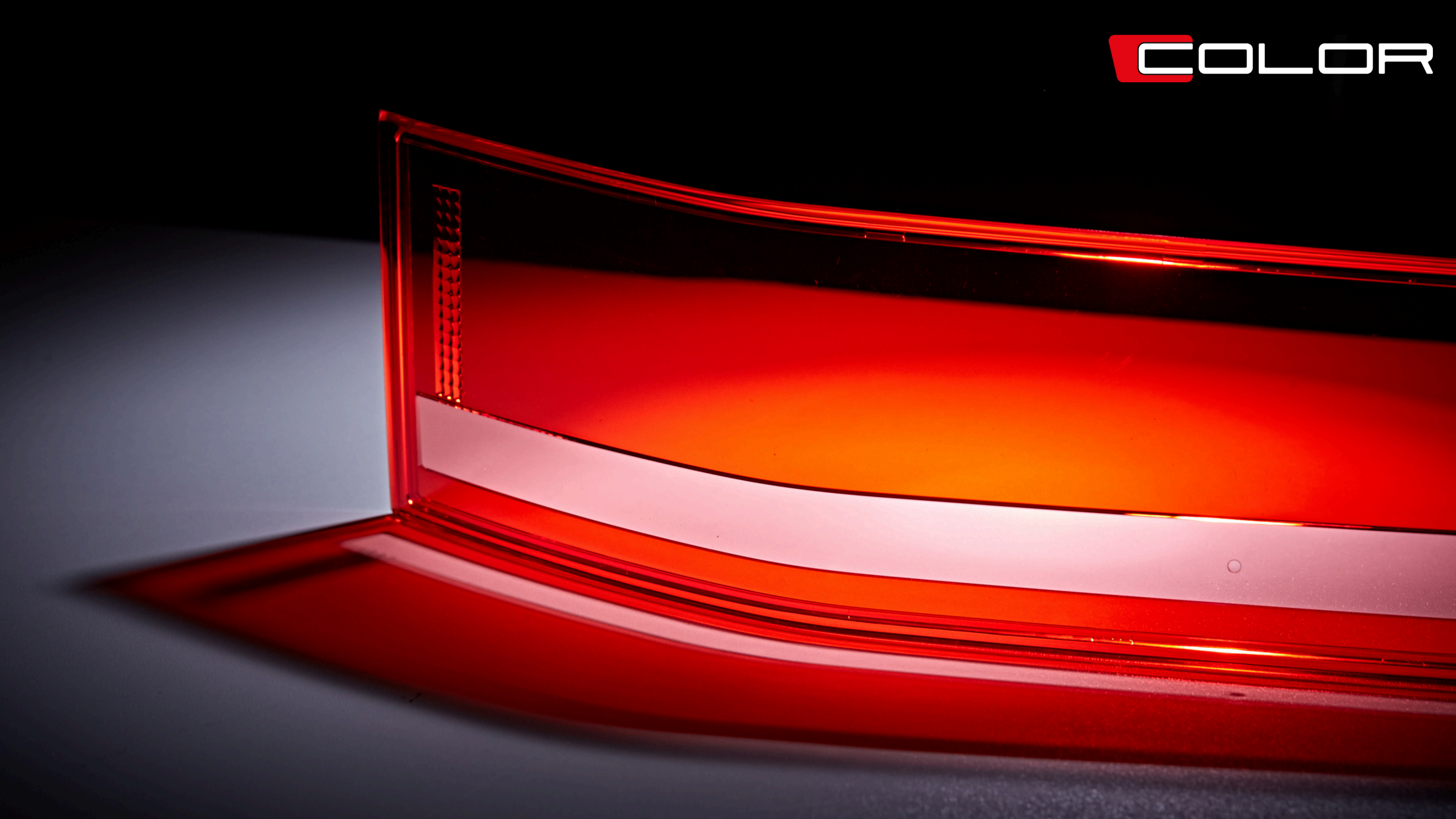




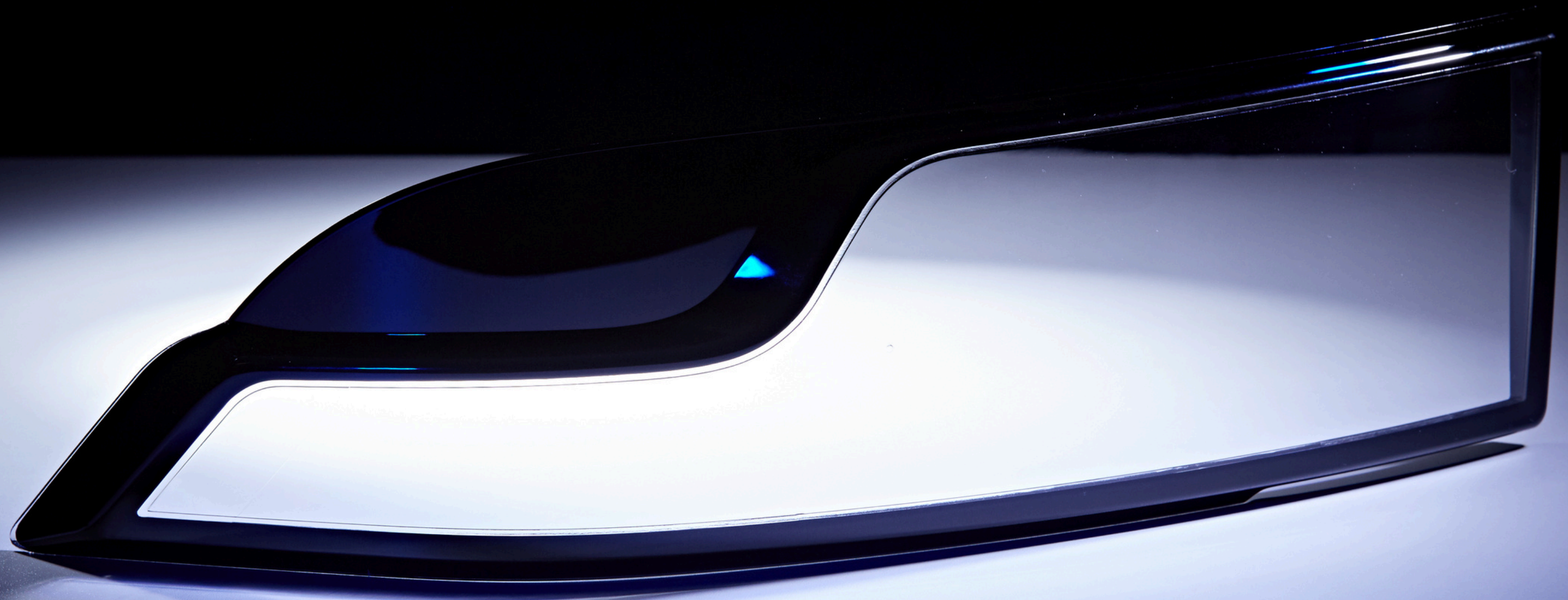
The logo for the brand 'COLOR' is located in the top right corner. It features a red square icon with a white 'C' shape inside, followed by the word 'COLOR' in a white, uppercase, sans-serif font.



The logo for the brand 'COLOR' is positioned in the top right corner. It features a red square icon with a white 'C' shape inside, followed by the word 'COLOR' in a white, bold, sans-serif font.



COLOR







COLORplastic Automotive

Automotive Injection moulding



We currently own 18 injection moulding machines

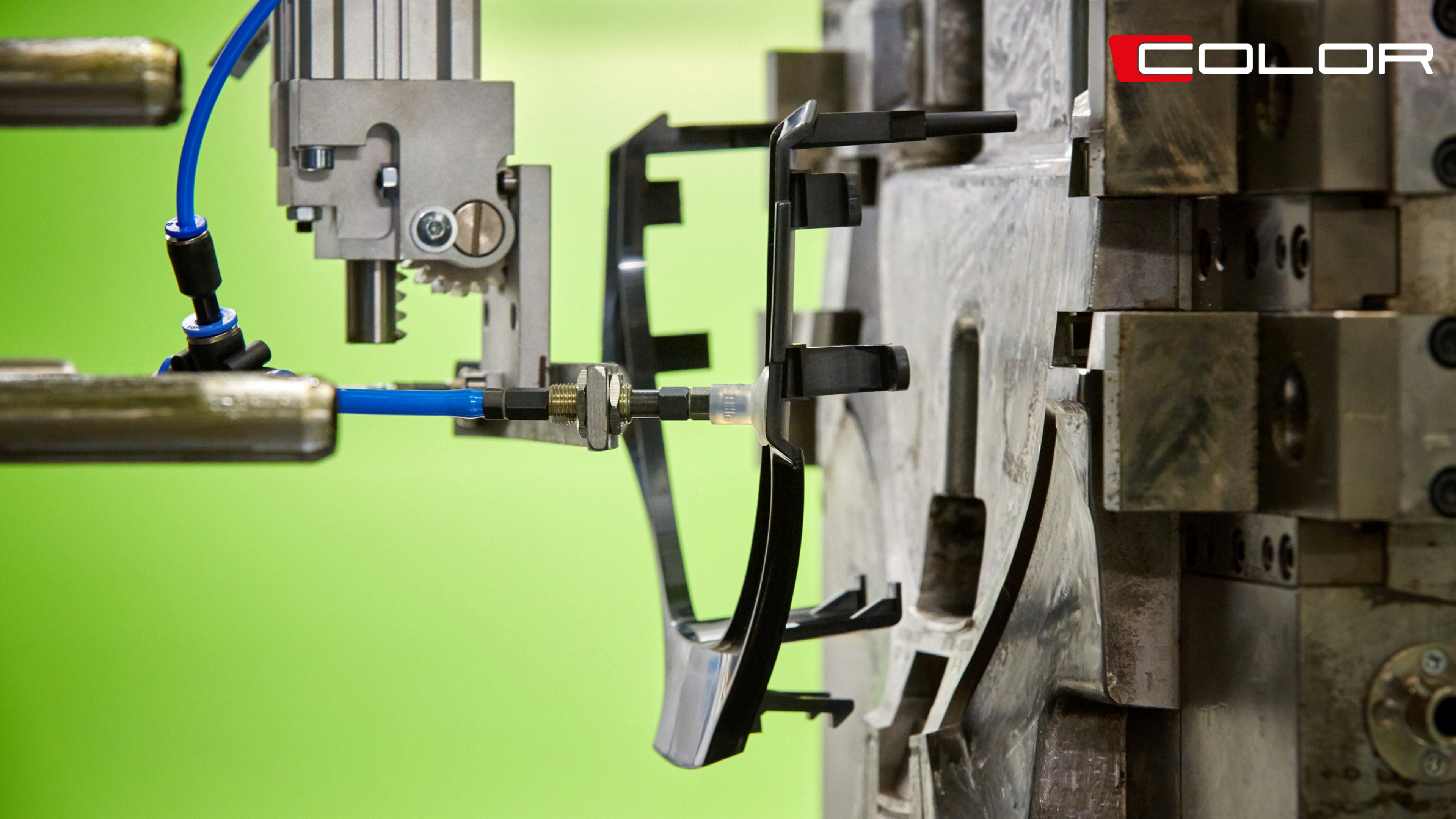
80 T 160 T 220 T 250 T 300 T 400 T

400 T 2K 420 T 500 T x 5 550 T

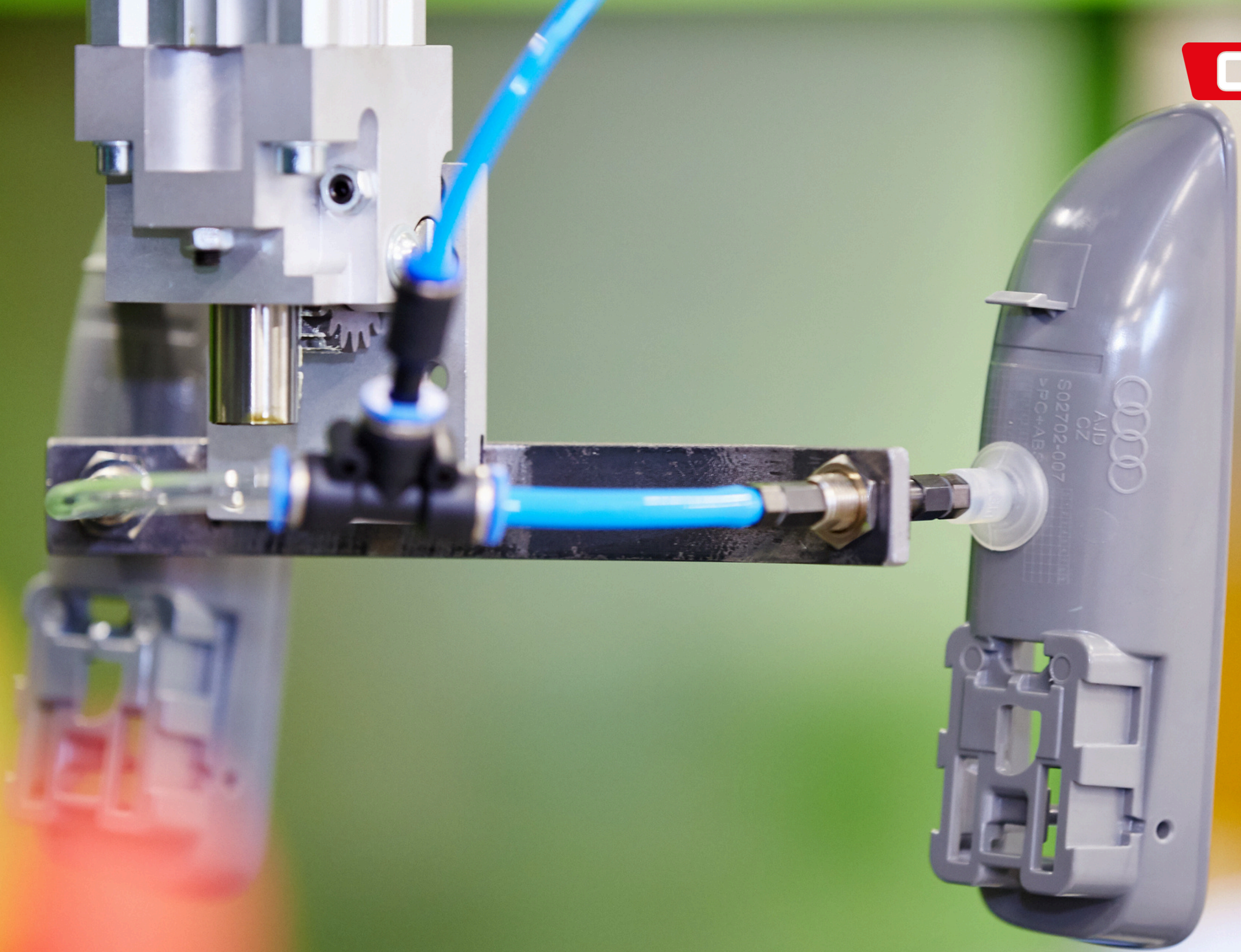
700 T 900 T 1700 T 2000 T

Injection moulding













EMGEE
duo 1700

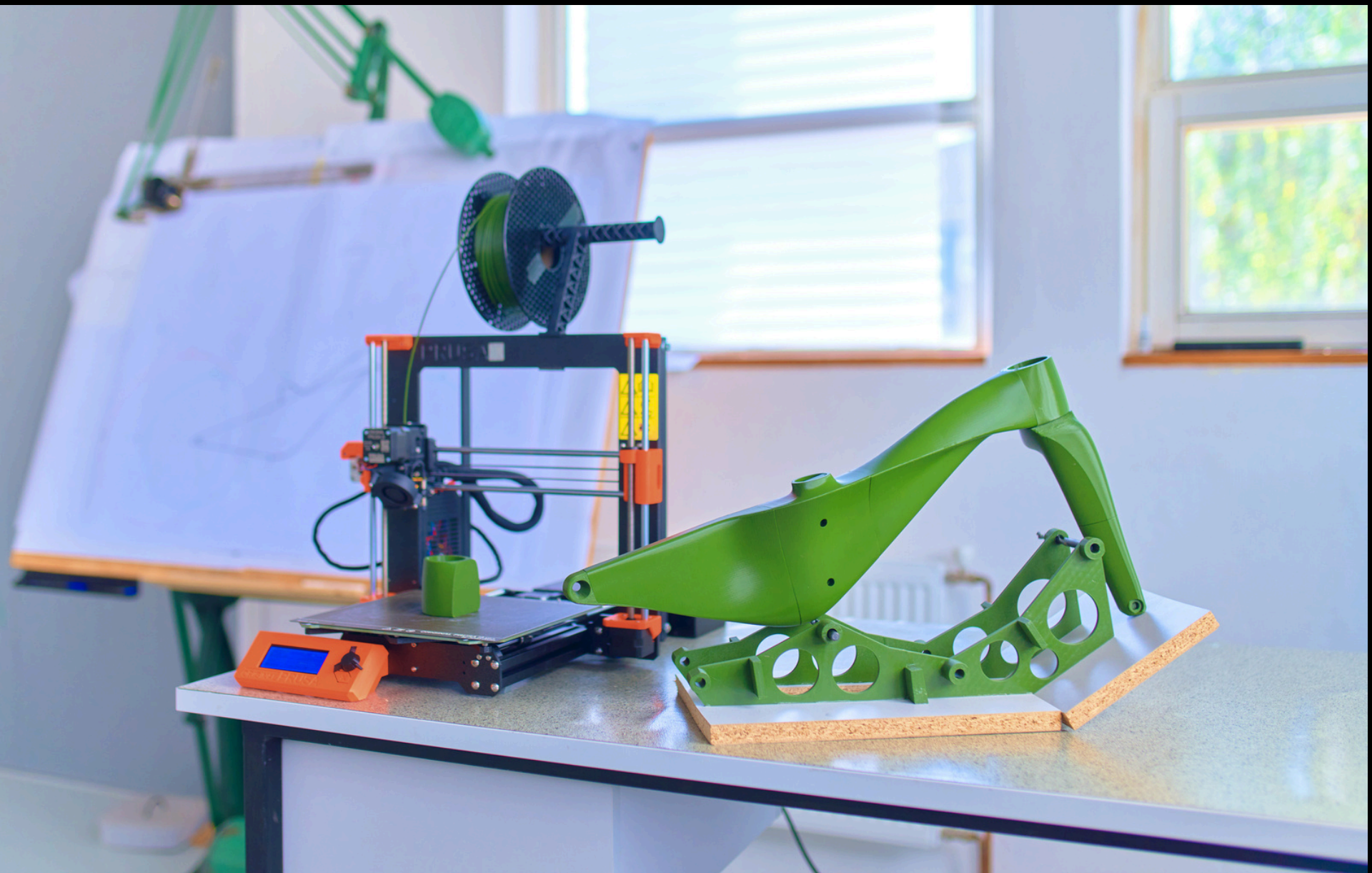
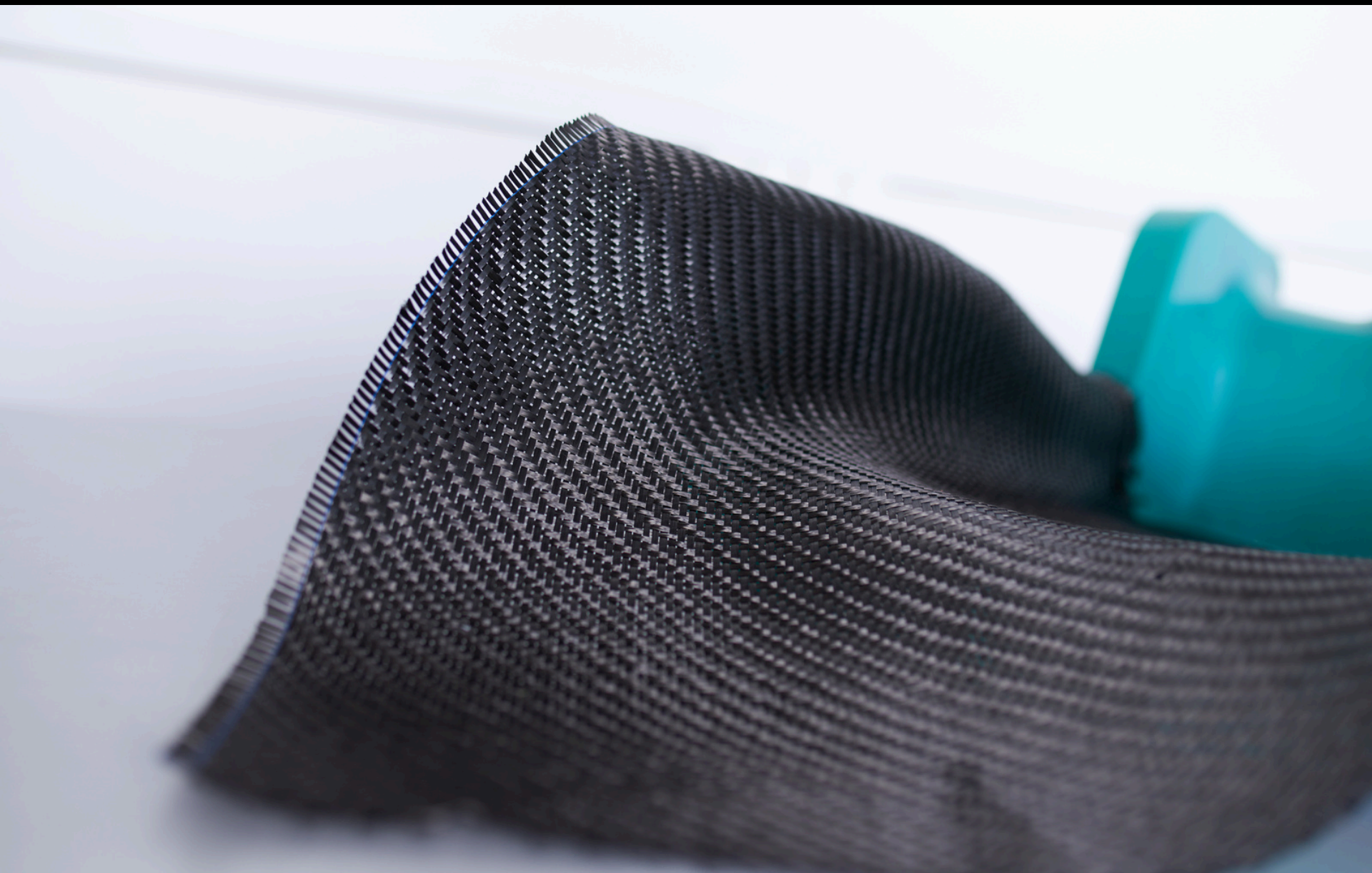
9
Vstřikovací lis



COLORprofi **Fiber**

Development of carbon products

Post-processing of bike frames, Cycling industry



Carbon lamination

COLOR



COLO



Green Cell

COLOR
O
COLO



COLOR
COLO



Support & Marketing

CP team - MTB & Cyclocross Cycling



Thank you!

